

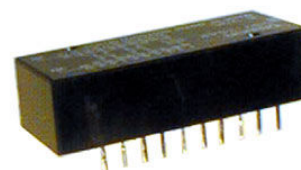
NO: RL-117
DATE: October 2006

PRODUCT: G5Y-2 High Frequency Relay
TYPE: Discontinuation Notice

G5Y-2 High Frequency Signal Relay to be Discontinued 3/30/2007

OER will be discontinuing the G5Y-2 series relays at the end of FY 06. Final order date is March 30, 2007.

There are **no** direct replacements for this series. However, suggested replacements are available for these existing part numbers:



<u>Discontinued</u>	<u>Replacement</u>
Type G5Y-254P-1	→ Type G6Z-1P(E), or Type G6K-2F-RF
Type G5YK-254P-1	→ Type G6ZK-1P(E)

There are some significant differences that must be noted; please confirm that the specifications will meet the customer's requirements:

Differences Include:

- Dimensions
- Pin layout
- Contact form: G6Z is SPDT; two relays suggested for replacement.
- Contact form: G6K-RF is DPDT; one relay suggested for replacement.
- Internal connections

Series Comparison

Type	Color	Dimensions	Wiring connection	Mounting Dimension	Rating Characteristic	Operating characteristic	Operating Method
G6Z-1P(E)	X	X	X	X	○	○	●
G6ZK-1P(E)	X	X	X	X	○	○	●
G6ZK-1P(E)	X	X	X	X	●	●	●

○ : Fully compatible

● : Similar

X : Not compatible

Detailed Comparison

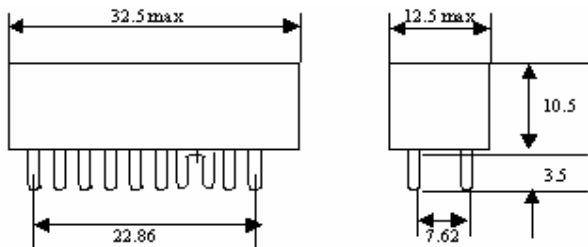
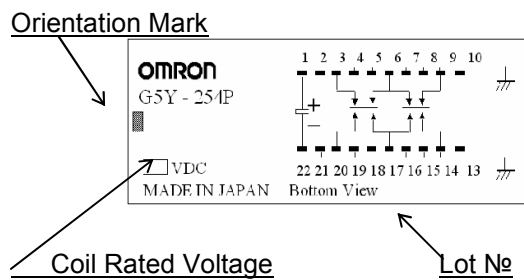
COLOR:

G5Y-2	G6Z , G6K-2F-RF
Black	G6Z → White G6K-2F-RF → Metal Case (Sn coat)

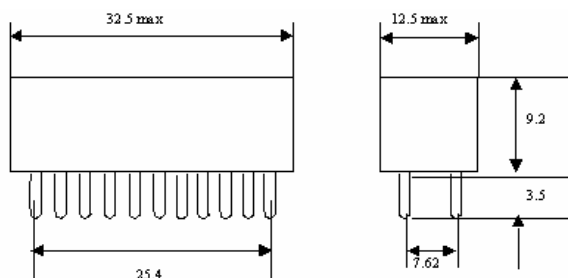
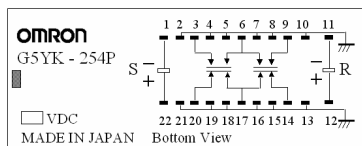
DIMENSIONS:

G5Y-2

Type G5Y-254P- 1 :

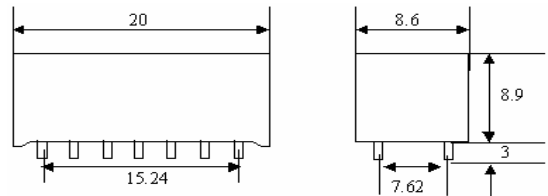
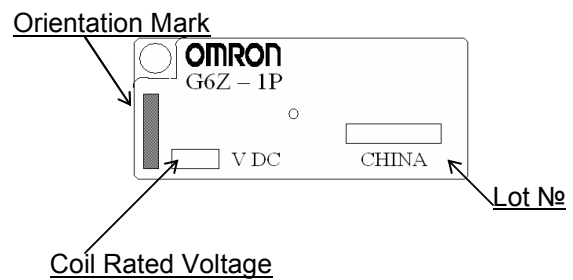


Type G5YK-254P- 1 :

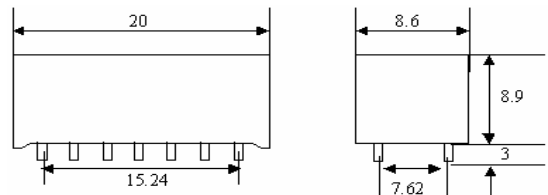
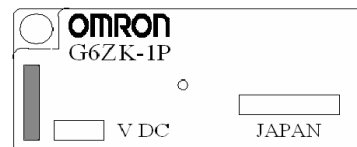


G6Z , G6K-2F-RF

Type G6Z-1P(E):

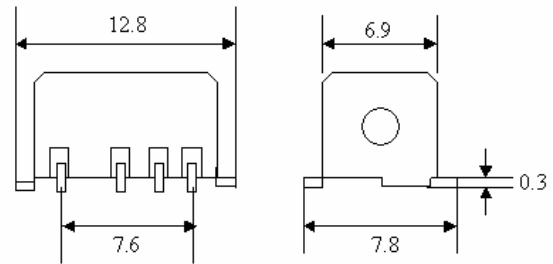


Type G6ZK-1P(E):



DIMENSIONS: continued

Type G6K-2F-RF:

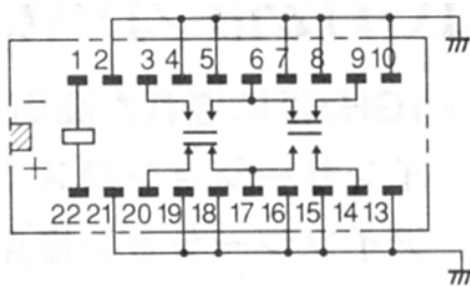


TERMINAL ARRANGEMENT / INTERNAL CONNECTIONS

G5Y-2

Type G5Y-254P-1

Terminal arrangement/internal connections
(BOTTOM VIEW)

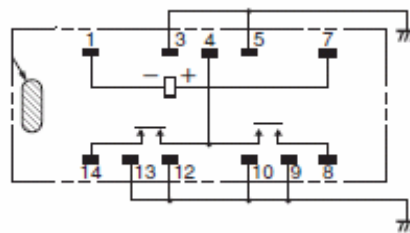


(The coil has polarity)

G6Z , G6K-2F-RF

Type G6Z-1P

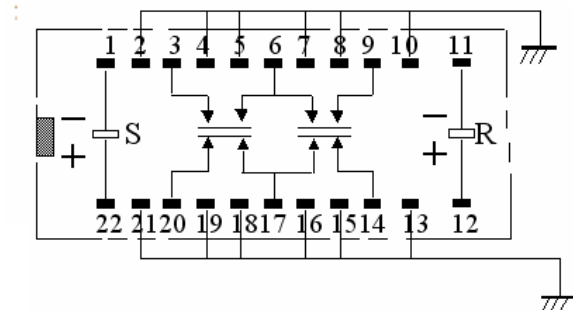
Terminal arrangement/internal connections
(BOTTOM VIEW)



(The coil has polarity)

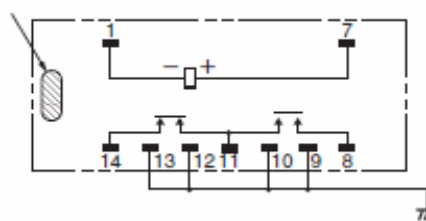
Type G5YK-254P-1

Terminal arrangement/internal connections
(BOTTOM VIEW)



Type G6Z-1PE

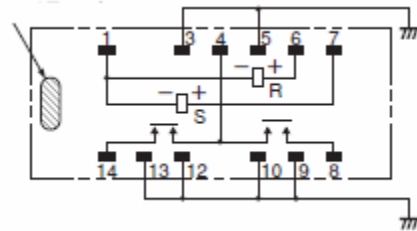
Terminal arrangement/internal connections
(BOTTOM VIEW)



Type G6ZK-1P

Terminal arrangement/internal connections

(BOTTOM VIEW)

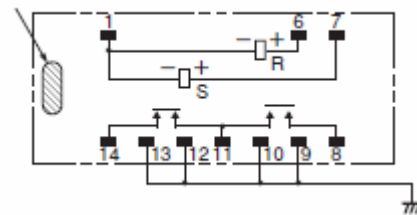


(The coil has polarity)

Type G6ZK-1PE

Terminal arrangement/internal connections

(BOTTOM VIEW)

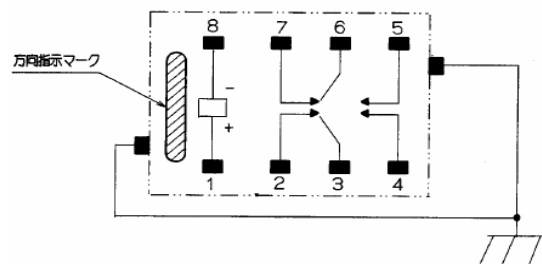


(The coil has polarity)

Type G6K-2F-RF

Terminal arrangement/internal connections

(BOTTOM VIEW)



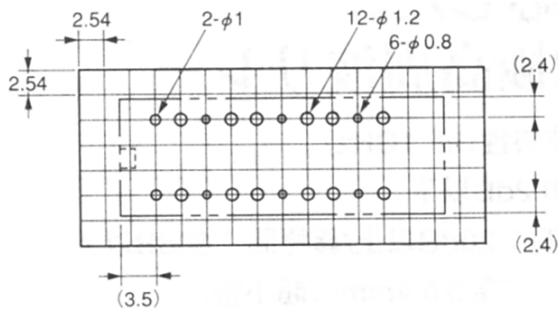
(The coil has polarity)

MOUNTING DIMENSIONS

Type G 5 Y-254P-1

Mounting dimensions
(BOTTOM VIEW)

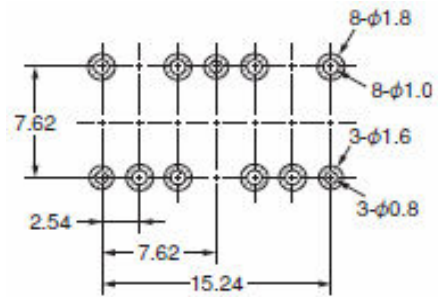
Tolerance ;±0.1mm



Type G6Z-1P

Mounting dimensions

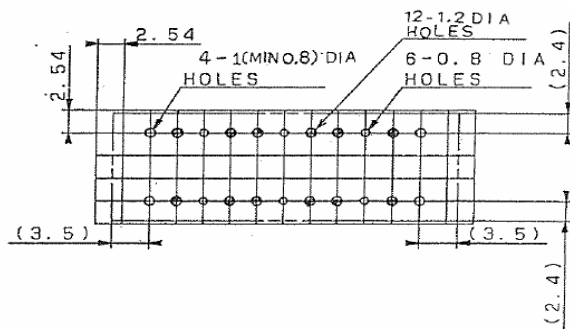
(BOTTOM VIEW)



Type G5YK-254P-1

Mounting dimensions
(BOTTOM VIEW)

Tolerance ;±0.1mm

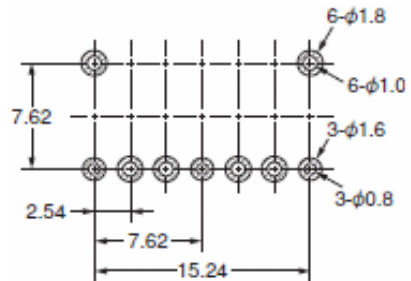


Type G6Z-1PE

Mounting dimensions

(BOTTOM VIEW)

Tolerance ;±0.1mm

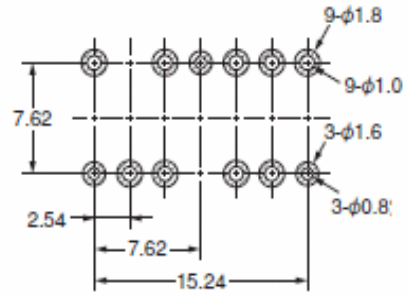


Type G6ZK-1P

Mounting dimensions

(BOTTOM VIEW)

Tolerance ;±0.1mm

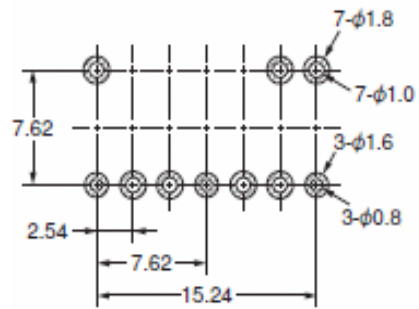


Type G6ZK-1PE

Mounting dimensions

(BOTTOM VIEW)

Tolerance ;±0.1mm

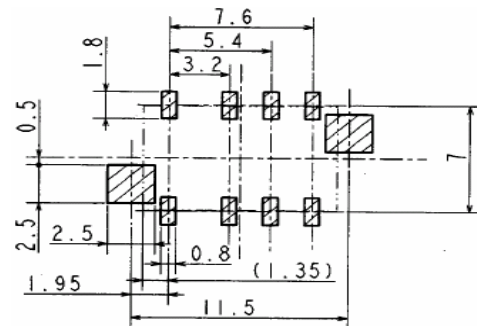


Type G6K-2F -RF

Mounting dimensions

(BOTTOM VIEW)

Tolerance ;±0.1mm



RATING CHARACTERISTICS / OPERATING CHARACTERISTICS

DISCONTINUATION PRODUCT		REPLACEMENT PRODUCT	
Type G5Y-254P-1		Type G6Z-1P(E)	
Max. switching voltage	AC30V , DC30V	Max. switching voltage	AC30V , DC30V
Max. switching current	0.1A	Max. switching current	0.5A
Electrical endurance	300,000 operations min.	Electrical endurance	300,000 operations min.
Mechanical endurance	1,000,000 operations min.	Mechanical endurance	1,000,000 operations min.
Dielectric : Between coil and contacts Strength : Between contacts of same polarity : Between coil and ground and Between contacts and ground	AC1000V for 1 min AC500V for 1 min AC500V for 1 min	Dielectric : Between coil and contacts Strength : Between contacts of same polarity : Between coil and ground and Between contacts and ground	AC1000V for 1 min AC500V for 1 min AC500V for 1 min
Power consumption	Approx. 360mW	Power consumption	Approx. 200mW
Must operate voltage	Max 75%	Must operate voltage	Max 75%
Must release voltage	Min 5%	Must release voltage	Min 10%
Ambient temperature	-25°C ~ +60°C	Ambient temperature	-40°C ~ +70°C

Type G5Y-254P-1		Type G6K-2F-RF	
Max. switching voltage	AC30V , DC30V	Max. switching voltage	AC125V , DC60V
Max. switching current	0.1A	Max. switching current	1A
Electrical endurance	300,000 operations min.	Electrical endurance	100,000 operations min.

Mechanical endurance	1,000,000 operations min.	Mechanical endurance	50,000,000 operations min.
Dielectric : Between coil and contacts Strength : Between contacts of same polarity : Between coil and ground and Between contacts and ground	AC1000V for 1 min AC500V for 1 min AC500V for 1 min	Dielectric : Between coil and contacts Strength : Between contacts of same polarity : Between coil and ground and Between contacts and ground	AC750V for 1 min AC750V for 1 min AC500V for 1 min
Power consumption	Approx. 360mW	Power consumption	Approx. 100mW
Must operate voltage	Max 75%	Must operate voltage	Max 80%
Must release voltage	Min 5%	Must release voltage	Min 10%
Ambient temperature	-25°C ~ +60°C	Ambient temperature	-40°C ~ +70°C